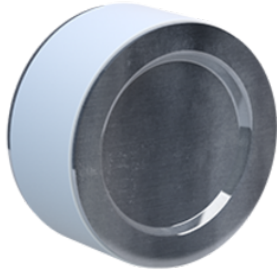


BF 1300V



- ↳ 2-electrode GDT
- ↳ GSG (Gas filled Spark Gap)
- ↳ No radioactive



Electrical Characteristics		
DC sparkover voltage (100V/s)		1100 V
Impulse Spark-over Voltage 1.2/50µs to 6kV		<2500 V
Follow current	If	Yes
Follow current interrupting capability	Ifi	> 100 A
Nominal discharge current 15 x 8/20 µs impulses	In	80 kA
Total Maximum discharge current max. total withstand @ 8 /20 µs	I _{max Total}	150 kA
Impulse current by pole max. withstand 10/350µs by pole	I _{imp}	50 kA
Max. capacitance	C	< 4 pF
Insulation resistance	IR	>1 GOhms
Mechanical Characteristics		
Operating and storage temperature		-40°C / +90°C
Number of units per package		200 units per packaging
Dimensions		See diagram
Standards		
Standards compliance		IEC 61643-11 / IEC 61643-311
RohS compliance		Yes
Part number		
90131097		

Note: At delivery AQL 0.65 II, DIN ISO 2859